

# north country

## meat & seafood

### SELLERS ORDER FORM

Organization Name: St. Jean de Brebeuf Catholic School

Name: \_\_\_\_\_ Ph.# \_\_\_\_\_

Make cheques payable to: St. Jean de Brebeuf

Centre-Of-The-Plate quality products served by major hotels, restaurants and the foodservice industry, North Country is pleased to provide Teams & Organizations with this program to assist in reaching their

Product Description	Code	Ounces	lb/ Wt	Price	Quantity	Totals
Steakhouse Burger	46342	40x4oz	9.96lbs	\$ 53.00		
Steakhouse Burger	40002	24x6ozs	9.00lbs	\$ 50.00		
AA Striploin Steak 2pc/pkg	13792	12x10oz	7.54lbs	\$ 110.00		
B/ W Tenderloin Steak 2pc/pkg	14962	20x4oz	4.98lbs	\$ 72.00		
CAB Striploin Steak 2pc/pkg 	14412	12x10oz	7.54lbs	\$ 125.00		
CAB Top Sirloin Steak 2pc/pkg 	14662	16x6oz	6.00lbs	\$ 92.00		
Cooked Beef Meatballs Italian Style	90072	450x.35oz	9.92lbs	\$ 40.00		
Breaded Chicken Fingers	71025	random	8.8lbs	\$ 55.00		
IVP Just Chicken Breast (B/S)	77162	6-8oz	8.8lbs	\$ 75.00		
Pork Chops Centre Cut ¾ inch	61992	random	10-10.5lbs	\$ 52.00		
Butterfly Garlic Shrimp 16 - 20 per lb	81272	36x.88oz	2.00 lbs	\$ 33.00		
Atlantic Salmon Portions(B/S) 2pc 	88661	20x5oz	6.17lbs	\$ 80.00		
Vendor Sausage	95812	30x5oz	9.92lbs	\$ 50.00		
Fully Cooked Chicken Wings	90032	random	2x3.0lbs	\$ 58.00		
Slow Cooked Beef Pot Roast	92042	5x31.75oz	9.92lbs	\$ 85.00		
Smoked Pork Back Ribs BBQ Sauce	92852	6x21oz	7.87lbs	\$ 60.00		
All Beef Hot Dogs	64222	30x3.2oz	6.61lbs	\$ 35.00		
Just Chicken Thigh Meat	77132	2pc/pkg	8.8lbs	\$ 75.00		
Sliced Peameal Bacon	60062	8pc/pkg	6x500g	\$ 43.00		
Lightly Breaded Wild Cod Fillets	89982	50-60x80gr	8.8lbs	\$ 70.00		
				<b>TOTAL</b>		

# north country

## meat & seafood

### PRODUCT INFORMATION



**Steakhouse Burger**  
**Product Code: 46342**  
 Price: \$53.00  
 Portion: 40 x 113g or 40 x 4oz  
 Box Wt.: 4.52kg or 9.96lbs  
 Average Retail Price: \$61.00

Old fashioned beef burgers the way you like them: extra juicy with an out-of-this-world taste.

Serving	Cal	Fat	Sat. Fat	Trans	Chol	Sodium	Carb	Protein
100 g	280	20 g	8 g	0.2 g	75 mg	340 mg	3 g	22 g



**Steakhouse Burger**  
**Product Code: 40002**  
 Price: \$50.00  
 Portion: 24 x 170g or 24 x 6oz  
 Box Wt.: 4.08kg or 9.00lbs  
 Average Retail Price: \$61.00

Old fashioned beef burgers the way you like them: extra juicy with an out-of-this-world taste.

Serving	Cal	Fat	Sat. Fat	Trans	Chol	Sodium	Carb	Protein
100 g	280	20 g	8 g	0.2 g	75 mg	340 mg	3 g	22 g



**AA Striploin Steak**  
**Product Code: 13792**  
 Price: \$110.00  
 Portion: 12 x 285g or 12 x 10oz  
 Box Wt.: 3.42kg or 7.54lbs  
 Average Retail Price: \$130.00



The King of steaks, the NY Style Striploin is a classic for a reason. Tender, moist and it delivers a steakhouse experience every time.

Serving	Cal	Fat	Sat. Fat	Trans	Chol	Sodium	Carb	Protein
100 g	210	9 g	3.5 g	0.8 g	70 mg	55 mg	0 g	28 g



**B/W Tenderloin Steak**  
**Product Code: 14962**  
 Price: \$72.00  
 Portion: 20 x 113g or 20 x 4oz  
 Box Wt.: 2.26kg or 4.98lbs  
 Average Retail Price: \$95.00

The most tender of all steaks, these tenderloins or filet mignon will melt in your mouth. Wrapped in smoky bacon for an additional flavour boost.

Serving	Cal	Fat	Sat. Fat	Trans	Chol	Sodium	Carb	Protein
100 g	150	6 g	2g	0 g	60mg	110 mg	0 g	22 g



**Certified Angus Beef® Striploin Steak**  
**Product Code: 14412**  
 Price: \$125.00  
 Portion: 12 x 285g or 12 x 10oz  
 Box Wt.: 3.42kg or 7.54lbs  
 Average Retail Price: \$145.00



Beautifully marbled and aged for a minimum of 28 days, ensuring a tender, succulent, flavourful steak.

Serving	Cal	Fat	Sat. Fat	Trans	Chol	Sodium	Carb	Protein
100 g	210	9 g	3.5g	0.8 g	70 mg	55 mg	0 g	28 g



**Certified Angus Beef® Top Sirloin Steak**  
**Product Code: 14662**  
 Price: \$92.00  
 Portion: 16 x 170g or 16 x 6oz  
 Box Wt.: 2.67kg or 6.00lbs  
 Average Retail Price: \$105.00



Thick and juicy, these top sirloin steaks give you that 'baseball' steak experience. For best results should be served medium.

Serving	Cal	Fat	Sat. Fat	Trans	Chol	Sodium	Carb	Protein
100 g	340	5 g	2g	0.2 g	55mg	55 mg	0 g	21 g



**Italian Cooked Meatballs**  
**Product Code: 90072**  
 Price: \$40.00  
 Portion: 450 x 0.35oz  
 Box Wt.: 4.5kg or 9.0lbs  
 Average Retail Price: \$50.00

A crowd pleaser at any party, complimented in your favourite sauce or as a wonderful addition to spaghetti! One of our top sellers!

Serving	Cal	Fat	Sat. Fat	Trans	Chol	Sodium	Carb	Protein
100 g	270	22.5 g	9.0g	0 g	60mg	600 mg	4 g	14 g

# north country

## meat & seafood

### PRODUCT INFORMATION



**All Beef Jumbo Hot Dogs**  
**Product Code: 64222**  
 Price: \$35.00  
 Portion: 30 x 90g  
 Box Wt.: 6.1 lbs  
 Average Retail Price: \$40.00



Serve up juicy, great tasting, all beef hot dogs, just like at the ball park!

Serving	Cal	Fat	Sat. Fat	Trans	Chol	Sodium	Carb	Protein
100 g	150	11 g	3 g	0 g	30 mg	760 mg	2 g	10 g



**Just Chicken Thigh**  
**Product Code: 77132**  
 Price: \$75.00  
 Portion: 2 thighs per package  
 Box Wt.: 4 kg or 8.8 lbs  
 Average Retail Price: \$89.00



Moist, succulent & flavorful this skinless thigh meat is well suited to a number of cooking applications; marinated, grilled, stewed or roasted. Our thigh meat is 100% additive free-no added water or salt. Vacuum sealed 2 thighs per package for your convenience

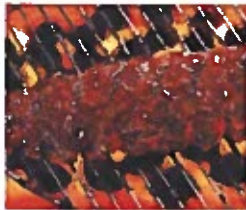
Serving	Cal	Fat	Sat. Fat	Trans	Chol	Sodium	Carb	Protein
100 g	140	8 g	2.5 g	0.1 g	90 mg	70 mg	0 g	19 g



**Slow Ckd Beef Pot Roast**  
**Product Code: 92042**  
 Price: \$85.00  
 Portion: 5 x 900 or 5 x 31.75oz  
 Box Wt.: 4.50kg or 9.92lbs  
 Average Retail Price: \$100.00

Fresh, great tasting, healthy entrées ready in just 10 minutes! Our chefs have carefully selected and hand seasoned the best cuts of meat to prepare an entrée that you will be proud to serve your family and guests.

Serving	Cal	Fat	Sat. Fat	Trans	Chol	Sodium	Carb	Protein
100 g	200	9 g	1.5 g	0 g	20 mg	540 mg	21 g	11 g



**Smkd/Ckd Pork Back Ribs in BBQ sauce**  
**Product Code: 92852**  
 Price: \$60.00  
 Portion: : 6 x 595g or 6 x 21oz  
 Box Wt.: 3.57kg or 7.87lbs  
 Average Retail Price: \$70.00

Smoked and slow cooked pork back ribs...real smoke, real slow, real good!

Serving	Cal	Fat	Sat. Fat	Trans	Chol	Sodium	Carb	Protein
100 g	290	19 g	7 g	0 g	75 mg	300 mg	13 g	16 g



**Sliced Peameal Bacon**  
**Product Code: 60062**  
 Price: \$43.00  
 Portion : 6x 500g  
 Box wt: 3 kg / 6.61lbs



This Peameal Bacon is made from hand trimmed, fresh, never frozen Canadian pork loins. In addition to being certified Gluten Free, it also features the lowest sodium, fat, cholesterol and the highest protein out of all other peameal in the market place.

Serving	Cal	Fat	Sat. Fat	Trans	Chol	Sodium	Carb	Protein
100g	100	1.5g	0 g	0 g	5 mg	650 mg	4g	18 g

### FEATURED PRODUCT



**Lightly Breaded Wild Cod Fillets**  
**Product Code: 89982**  
 Price: \$ 70.00  
 Portion : 50-60pc x 80g  
 Box wt: 8.8lbs

We have taken our truly amazing formula for our famous chicken "fingers" that you know and love, and created simply "the best" oven ready crispy fish filet. We have made it super easy to make fish a part of your weekly diet!

Serving	Cal	Fat	Sat. Fat	Trans	Chol	Sodium	Carb	Protein
100g	210	4g	0.5g	0 g	20mg	400mg	31g	12g

# north country

## meat & seafood

### PRODUCT INFORMATION



**Breaded Chicken Fingers**  
**Product Code: 71025**  
 Price: \$55.00  
 Portion: Random  
 Box Wt.: 4kg or 8.8lbs  
 Average Retail Price: \$68.00

These are the same chicken fingers you get in restaurants — now enjoy them at home! This spectacular product is also trans fat free.

Serving	Cal	Fat	Sat. Fat	Trans	Chol	Sodium	Carb	Protein
100 g	200	9 g	1.5 g	0 g	20 mg	540 mg	21 g	11 g



**IVP Just Chicken Breast**  
**Product Code: 77162**  
 Price: \$75.00  
 Portion: 6-8 oz  
 Box Wt.: 4kg or 8.8lbs  
 Average Retail Price: \$89.00

Simple. Real. Natural Boneless Skinless Chicken Breast. Nothing Added, nothing taken away. Conveniently individually vacuum packed for the very best quality chicken from your freezer.

Serving	Cal	Fat	Sat. Fat	Trans	Chol	Sodium	Carb	Protein
100 g	110	1 g	0.3 g	0 g	60 mg	40 mg	0 g	23 g



**Centre-Cut 3/4" Pork Chops**  
**Product Code: 61992**  
 Price: \$52.00  
 Portion: 23 x 200g or 23 x 7oz  
 Box Wt.: 4.54-4.75kg or 10-10.5lbs  
 Average Retail Price: \$60.00

Chophouse style, thick cut premium pork chops made for the grill. A very versatile meat, great with BBQ sauce, seasoning, even sweet onion and apples.

Serving	Cal	Fat	Sat. Fat	Trans	Chol	Sodium	Carb	Protein
100 g	210	9 g	3.5 g	0.8 g	70 mg	55 mg	0 g	28 g



**Butterfly Garlic Shrimp**  
**16/20**  
**Product Code: 81272**  
 Price: \$33.00  
 Box Wt.: 0.91kg or 2.0lbs  
 Average Retail Price: \$38.00

Black Tiger Shrimp/Prawns are butterflied and seasoned with herb and garlic.

Serving	Cal	Fat	Sat. Fat	Trans	Chol	Sodium	Carb	Protein
125 g	60	0.5 g	0.1 g	0 g	115 mg	710 mg	2 g	12 g



**Atlantic Salmon Portions**  
**Product Code: 88661**  
 Price: \$80.00  
 Portion: 20 x 140g or 20 x 5oz  
 Box Wt.: 2.80kg or 6.18lbs  
 Average Retail Price: \$95.00

Farmed in the Bay of Fundy, Jail Island Salmon has become synonymous with 'melt in your mouth' — fabulous grilled, baked or broiled.

Serving	Cal	Fat	Sat. Fat	Trans	Chol	Sodium	Carb	Protein
100 g	220	15 g	3.5g	0.3 g	55mg	40 mg	0 g	21 g



**Vendor Sausage**  
**Product Code: 95812**  
 Price: \$50.00  
 Portion: 30x 140g or 30 x 5oz  
 Box Wt.: 4.5kg or 9.92lbs  
 Average Retail Price: \$55.00

Not available at your local grocery store. These are the real deal-Debreizeni Sausage, naturally hardwood smoked and prepared with a wonderful balance of garlic and spices.

Serving	Cal	Fat	Sat. Fat	Trans	Chol	Sodium	Carb	Protein
100 g	260	22 g	8 g	0.2 g	60 mg	810 mg	1 g	15 g



**Fully Ckd Chicken Wings**  
**Product Code: 90032**  
 Price: \$58.00  
 Box Wt.: 2 x 1.36 kg  
 Average Retail Price: \$73.00

Our North Country Fully Cooked Wings have no water added and they crisp up beautifully to golden brown in your oven in only 20 minutes! They are great plain, or with your favorite wing sauce Restaurant quality wings, for the first time out of your oven.

Serving	Cal	Fat	Sat. Fat	Trans	Chol	Sodium	Carb	Protein
100 g	300	20 g	5g	0.2 g	95mg	260 mg	5 g	26 g